



**Behind Closed Doors event
3rd October 2008**

**Sarah Hunt - Locality Co-ordinator
Integrated Support Services**

**Vicki Wiltshire - Locality Senior
Children, Young People and Families**

What is Early Intervention?

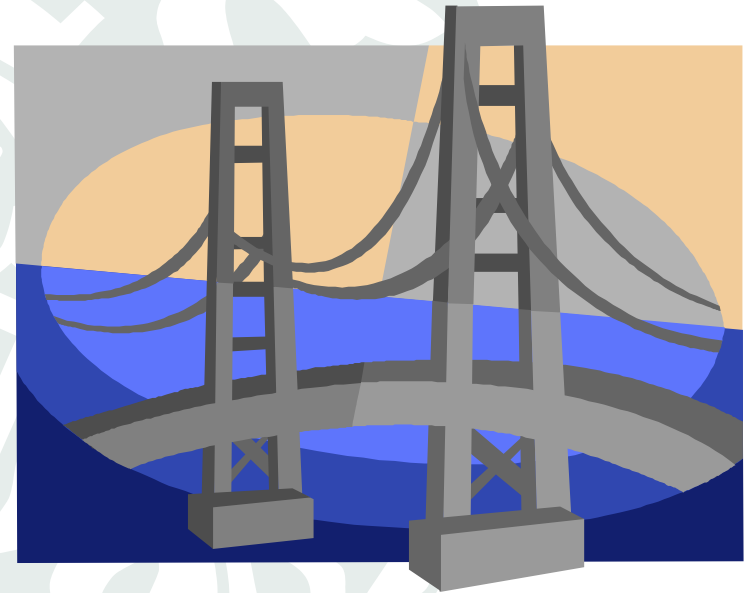
Every Child Matters highlighted the need for local authorities and partners to achieve better outcomes for children, young people and families by working together more effectively in local areas to secure high quality services.

In Oxfordshire we have now implemented:

- Locality Working
- Information Sharing
- Common Assessment Framework
- Team Around The Child
- Lead Professional

Integrated Support

- PCAMHS
- Children Centres
- Health Visitors
- Schools - HSLW
- Education Social Workers
- Voluntary agencies
- Educational Psychologist
- Behaviour Support Service
- Police – community
- Youth Offending Service –IDSS
- Adult Services



Interface equals Progress

- Locality Linked Social Workers
- Access to Assessment Team Duty for no named consultation
- Ongoing sharing of good practice
- Improved locality knowledge and communication
- Recognition of individual agencies
- Multi agency training and forums

Domestic Abuse and Locality working

To include :

- Locality Co-ordinators and Locality Seniors becoming Domestic Abuse champions
- Links to local refuges and implementation of CAF
- Domestic Abuse Champions in schools
- Locality multi agency knowledge of DA risk matrix
- Links to area MARAC
- DV Outreach support
- Links to housing
- Links to Domestic Violence Unit

Progress in Domestic Abuse Services

- Oxfordshire has a specific Children And Families DA Strategy which sits under its main Countywide DA Strategy and this has formal links to the Safeguarding Board.
- New Reducing The Risk Team which is a growing team of independent DA advisers targeted at high risk cases (providing outreach support). Requests for support are initiated at MARACs.
- We are just about to set up a secondment of a social worker into the team as contribution from OCC. There is already a police secondee and another IDVA and manager.
- New champions are coming in from children's services - especially schools and children's centres - and people are making the links between champions and localities at ground level.

The background features a large, faint, circular crest of the University of Cambridge. The crest is rendered in a light grey color and contains several heraldic elements: a lion passant guardant on the left, a unicorn on the right, a central shield with three sheaves of wheat, and a book. A scroll with text is draped across the top of the shield.

Social Care Intervention and Domestic Abuse

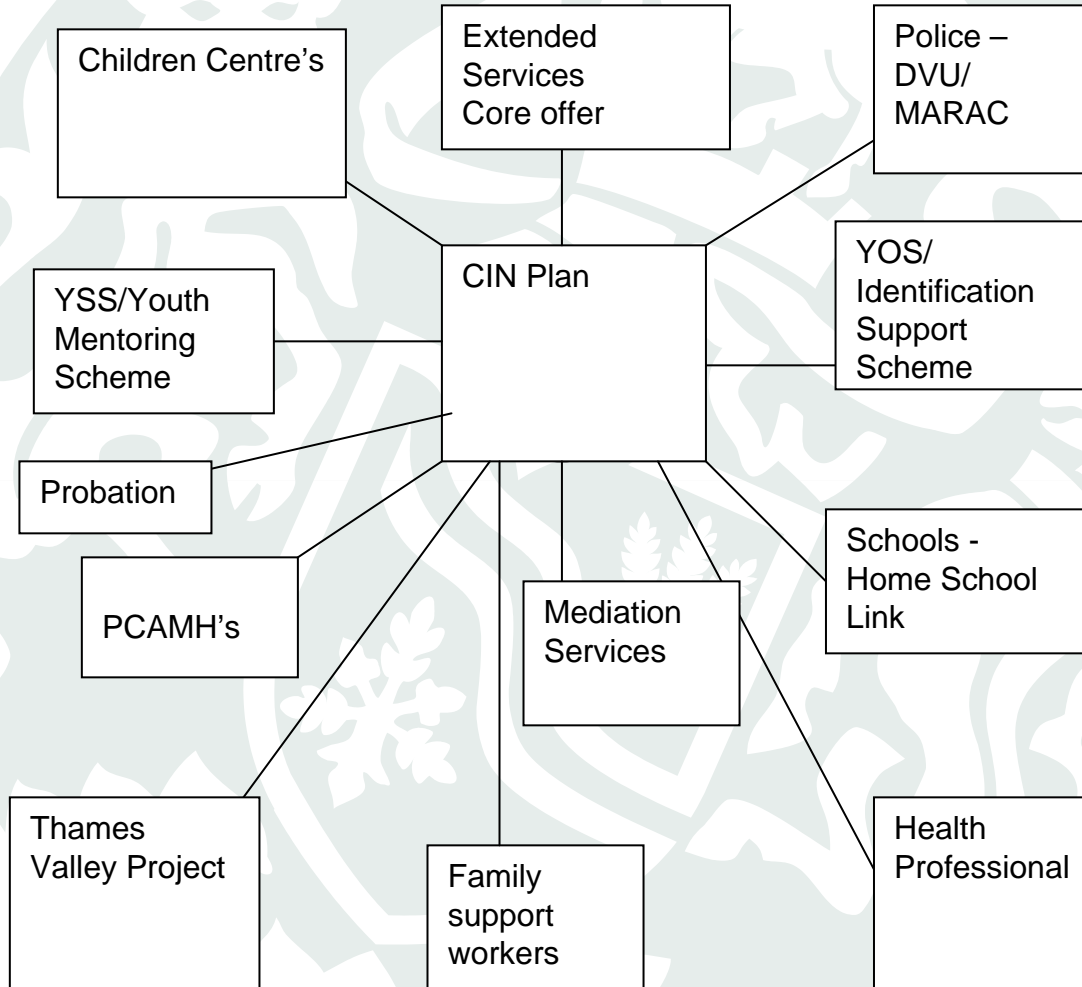
How are DV referrals processed?

- All standard reports will be sent to Education Social Work offices. This moving to county wide. Currently Schools in the North of the county are informed when an incident has occurred in order to support the child/young person
- All standard , medium and high reports are forwarded to the Assessment Teams
- They are individually processed and risk assessed
- All reports are logged in ICS – Integrated Childrens System
- Risk assessment may progress to referral

What Happens Next

- **Referral progressed s17 Child in Need Assessment**
- **Initial / Core / Risk Assessment**
- **Child In Need Plan (CIN)**
- **Targeted intervention – i.e. Protective Behaviour programme**

Signposting



What Happens next – Tiers 3 and 4

- **Referral progress to S47 – Child Protection Investigation**
- **Core Assessment**
- **Specialist Risk Assessment**
- **Family Support Conference**
- **Child Protection Conference**
- **Family Group Conference**

Tier 3/4 continued...

- Child Protection Plan
- Access to Refuge Services
- Access to Family Placement and Support Team = 1:1 support to child and parents
- Fortnightly visits by Social Worker
- Individual plan with Family Support Worker incorporating protective behaviours work
- Tier 4 involvement to include care proceedings and Looked After Children